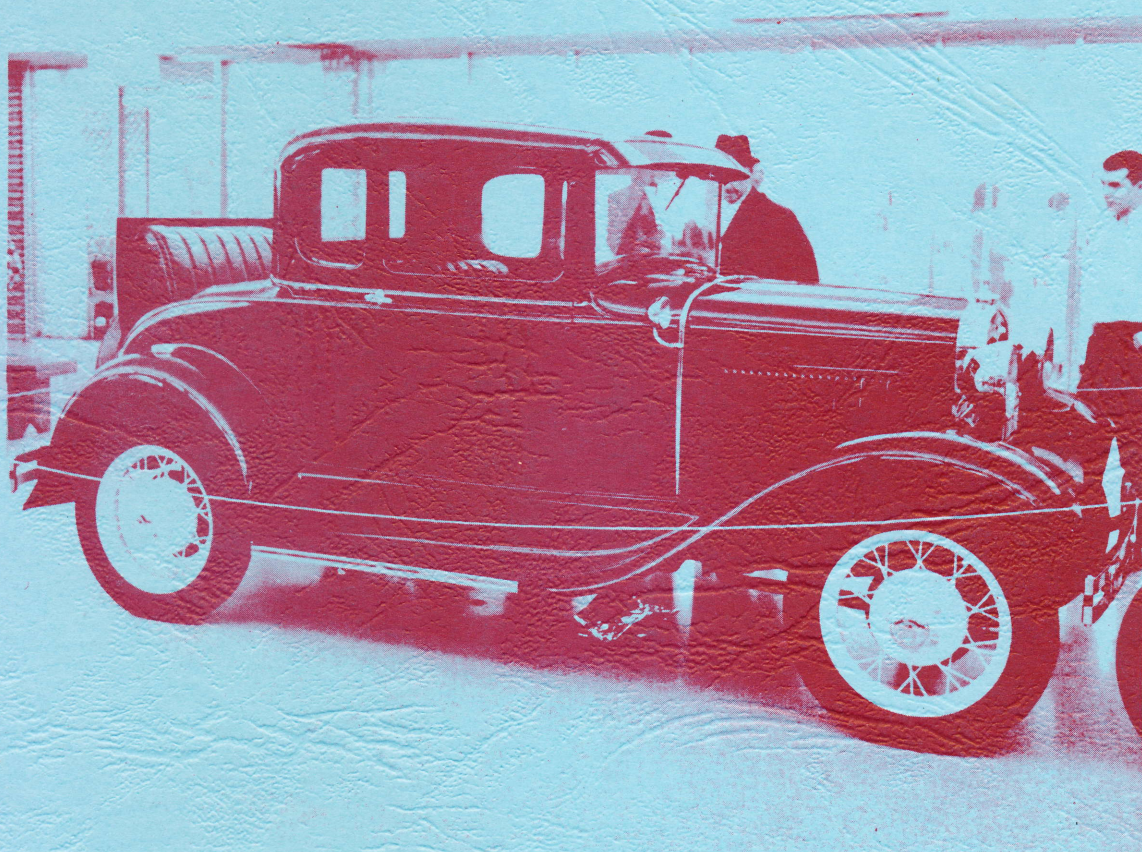


AUTO

ANTIQUARIAN

NEWS



NORTH ALABAMA REGION  
A.A.C.A.

JUNE 1967



# AUTO ANTIQUARIAN NEWS

VOL. 4, No. 6

JUNE 1967

Official Publication of the North Alabama Region, Antique Automobile Club of America, Inc.

## Officers

Regional Director	Bill Ashby
Assistant Director	Bill Hayle
Secretary	Bud Congdon
Treasurer	Ken Barry

## Tennessee Valley Chapter Officers

President	Ken Kirby
Vice President	Dale Crites
Secretary and Treasurer	Jimmy Kimsey

## Board of Directors

Don Huffine  
Dennis McCann  
Bill Spriggs  
Ken Kirby

Editorial Address:  
11018 Jean Rd., S. E.  
Huntsville, Alabama 35803  
Phone ---- 881-9677

## Regional Membership Committee

Don Pryor  
Phil Gambrell

Club Secretary Address:  
P. O. Box 1255  
Huntsville, Alabama  
Phone ---- 881-6051

\*\*\*\*\*

## PUBLICATION STAFF

Editor	Bill Spriggs
Associate	Tom Holley
Art and Layout	Bill Caldwell
Mailing	Bud Congdon
Want Ads	Dennis McCann
AACA Reporter	Ed Zogg
Sickness and Distress	Doc Becraft
T.V. Chptr. Rptr.	Jimmy Kimsey

## CONTENTS

	Page
Meeting News	4
T. V. Chapter News	6
Athens Show	7
BATON ROUGE	8
Penney's Mall Show	11
Interchangeable Parts	13
Calendar of Events	15
Ads, Leads, and Other	16
GATLINBURG	17
Clubroom Project	19
"A" Engine Tips	22

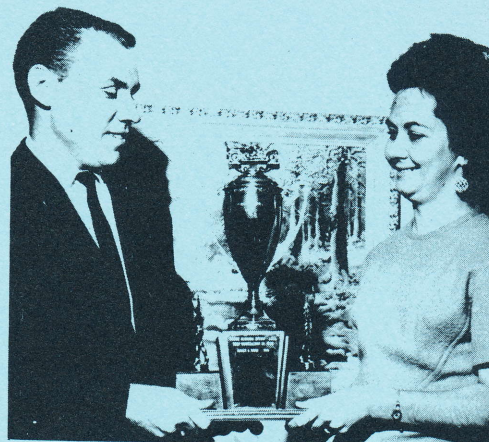
\*\*\*\*\*

Opinions expressed by contributors to A. A. NEWS are their own and do not necessarily reflect the official policy of this region or A. A. C. A. Deadline for contribution of all material is the 1st of the month.



COVER CAR — This month's cover features the 1931 Model "A" Ford coupe belonging to local member Don Pryor. The car is a basic standard coupe with approved accessories including cowl lamps and rumble seat. Colors are thorne brown on the lower body with a black upper body and straw yellow stripe and wheels.

Don obtained the car in 1961 while living in Knoxville, Tennessee, just prior to moving to Huntsville. It was the first car he ever bought and worked on and its general condition upon purchase was slightly above average, although several original items were missing and had to be replaced February of 1963, and officially completed during the winter of 1963.



Don Pryor receives the Totcky Memorial Award from Mrs. T. J. Totcky.

Prizes awarded the car during the 1966 show season included a 1st in class at Gatlinburg, Mobile, and the Maryville AACA judging; a 2nd in the Maryville Model "A" Restorer's Club judging, and an AACA National 1st at Huntsville. In addition to these, the car received the Thomas J. Totcky Memorial Award for the best restored car of the year in the North Alabama Region.

\*\*\*\*\*

ACKNOWLEDGEMENT: We are grateful for permission from Mr. Phillip D. Hoffman, Editor of the Model "T" Times, to reprint the excellent and informative article entitled "Interchangeable Parts for Model "T" Fords, by the very knowledgeable antique car authority, Mr. Murray Fahnestock, S.A.E. '21, Pittsburgh, Pennsylvania. The article appeared in the November-December 1966 issue of the Model "T" Times. It should hold special interest for all "T" and 4-cyl. Chevy owners.

\*\*\*\*\*

COMMENT: We are very happy to publish information from Mr. Billy Moore, Meet Chairman, for the AACA CENTRAL DIVISION FALL MEET to be held in August at Baton, Rouge, Louisiana.



**Remarkable driving ease and riding comfort  
in a smart and capable Six**

The high quality of the new Chevrolet Six—so evident in its smart new Fisher bodies—is also reflected in the way the car handles, responds and rides. You can turn corners easily with the new steering gear. You can start and stop quickly—park with little effort. Shifting gears is simplicity itself, due to an improved clutch and transmission. And you shift less frequently, due to the unusual power of the six-cylinder motor. Within the new Chevrolet, you also enjoy many comforts provided by the finer, roomier Fisher bodies: wider vision; deeper cushions; more attractive upholstery and adjustable driver's seat. And because the engine is so smooth and quiet, you can travel all day long in restful comfort. Women especially appreciate the bigger and better Chevrolet. It enables them to go about their daily routine—shopping, marketing, parties, clubs—and stay relaxed and refreshed. Chevrolet makes their driving a simple, easy and thoroughly enjoyable experience.



*Chevrolet prices range from \$475 to \$650, f. o. b. Flint, Michigan. Special equipment extra. Above is the new Convertible Cabriolet. Chevrolet Motor Company, Detroit, Michigan*

**NEW CHEVROLET SIX**  
*The Great American Value*

PRODUCT OF GENERAL MOTORS



## MEETING NEWS

The joint regional meeting, hosted by the Tennessee Valley Chapter, was well attended. It was held in Cook's Pest Control office on Volverine Drive in Decatur, Alabama. The Tennessee Valley Chapter and this region are indeed fortunate to have such a member as John Cook, who has so graciously made his office available for meetings. The building and all of its structural appointments, including the meeting hall itself, is an architectural pleasantry.

The meeting was called to order by Ken Kirby, Chapter President, who introduced Mr. W. McDow, representative of the Chamber of Commerce in Athens. Mr. McDow's presentation to the club, asking for a display of antique cars in Athens, Alabama, was well received by the membership. Motion was made by Bill Ashby, seconded by Bill Hayle, and unanimously supported by the membership, that the North Alabama Region in its entirety render support to the Tennessee Valley Chapter in producing this antique car show on 8 June in Athens, Alabama. Cars will be received in Athens, either late Wednesday, 7 June or early Thursday, 8 June for display. Those cars that arrive in Athens on Wednesday evening will be adequately stored until show time the next day.

Visitors welcomed and recognized were:

Ralph Burnett	'30 Model "A" 4-dr. sedan
Gene Mize	'38 Buick
	'30 "A" Model
	'31 "A" Model
Thomas P. Harper	'32 Auburn
Ernest Matthews	'22 "T" touring

It is our hope that these visitors will affiliate, in the very near future, as members.

Ken Kirby turned the meeting over to Bill Ashby, Regional Director, after recognition of visitors. The Penney's Mall Show was discussed and organized. It is expected that 30 or more cars will be entered in this show on 9-11 June. Bill Hayle, as show chairman, circulated the schedule for members to enter hours available for "policing" and helping at the show. Simultaneously, during this part of the meeting, the wives were holding a session on the antique fashion show that will be held during the Mall Meet. All wives are urged to participate and take part in this EVENT!

Discussion was held relative to holding a work party for the club-room at Dr. Becraft's office at 400 West Clinton Street on 3 June. The purchase of display stanchions, made of concrete filled wheels, was discussed. Motion was made by David Johnson and seconded by Dave Marty for the club to purchase 20 of these at a cost of \$1.40 each for a total cost of \$28.00, for use at shows.



## Meeting News continued

Ken Barry made a report on the treasury; his report included the fact that a certain number of members were delinquent in paying regional dues. The matter of delinquent dues was discussed at considerable length. A motion was made and passed to publish a list of members that have paid dues. After this issue of the AA News, all members who have not paid their 1967 dues of \$2.00 will be dropped from the club roster and will not receive the monthly publication or any future correspondence from the club. ANY MEMBER WHO IS DELINQUENT IN PAYING DUES IS URGED TO PAY NOW! PLEASE SEND CHECK, MONEY ORDER, OR CASH TO: Ken Barry, P. O. Box 1255, Huntsville, Alabama.

Certainly one of the better highlights of the meeting was the formal welcome of the Tennessee Valley Chapter into the North Alabama Region, by Bill Ashby, Regional Director. Ken Kirby, Chapter President, was presented with the Chapter Charter. Ken extended his thanks and appreciation to Bill Ashby, Dennis McCann, and all members in the North Alabama Region for helping to obtain the Chapter Charter for the Tennessee Valley Chapter.

The Regional Hospitality Meet, scheduled for the weekend of 26 August, was discussed. Ken Kirby and David Johnson were named co-chairmen for this Meet.

After an enjoyable intermission, including visiting, coffee, and refreshments, members were treated to a color movie of antique cars entitled "Through a Rear View Mirror." A black-and-white Mack Sennett comedy, with Ford Sterling, starring as a Keystone Cop in "Our Daredevil Chief" was thoroughly enjoyed.



Intermission and refreshments  
— enjoyed by all at the  
May meeting in Decatur.



Ken Kirby and Jimmy Kimsey  
are all smiles as Ken receives  
the T. V. Chapter Charter from  
Bill Ashby.



TENNESSEE VALLEY CHAPTER  
NORTH ALABAMA REGION  
A.A.C.A.  
Decatur, Alabama

News

The special meeting, held jointly with the Huntsville Club on Thursday night, May 25, was a success with a good attendance, both of members and prospective members, including a large number from the Huntsville Club. Mr. McDow of the Athens Chamber of Commerce presented a proposal to the Club to show cars in Athens on Thursday, June 8. After discussion, it was agreed to hold the show, if enough cars could be acquired.

This will be the first showing of cars by the Decatur Chapter. We expect at least twelve cars, many of which are furnished by the Huntsville Club. The Athens Chamber of Commerce has done an excellent job in making the arrangements for this show. They have provided covered overnight storage facilities for the cars as well as plastic covering in the event of rain, as the showing will be in the open.

Most of the Decatur members cars are still under restoration, but the progress is good. We hear that Dale Crites has finally located the rumble lid for his Chevrolet roadster. It seems that progress on Ken Kirby's Chevy pickup has been slowed due to the building of a new house. Chances are that the garage will be larger than the house if Ken has his way. Jim Kimsey Model "A" roadster is nearing the final stages of restoration, with a frantic effort to finish in time for the Model "A" Restorers Club National meet in Hot Springs Arkansas in August. Calvin Rogers would make you a bargain in a buggy (horse type). Seems that the buggy is taking the storage space reserved for Calvin's vintage Chevrolet.

Remember the regular meeting date, the second Thursday night in each month at Cook's Pest Control building.

Decatur Chapter New Member of the Month

Our new member of the month is RALPH BURNETT, wife's name CONNIE. Ralph lives at Route # 1, Hillsboro, Alabama, and owns a 1930 Model "A" 4 dr. Sedan, which is currently disassembled and under restoration. Ralph is 22 years of age and employed by Chremstrand Division, Monsanto Inc. Ralph's affection for the Model "A" was possibly inherited as his father and grandfather also own "A"s.

Jim Kimsey - Reporter

\*\*\*\*\*

BE AN INFORMED MEMBER, ATTEND THE NEXT MEETING !!!



## ATHENS SHOW

ATHENS, Alabama — like its namesake in far-off Greece — was a busy town on the 8th of June. Crowds thronged sidewalks and roped-off streets to view the thirteen antique automobiles on display. Cars were arranged in groupings of two's and three's around the courthouse square. The ancient but dignified courthouse, so reminiscent of architecture of a by-gone day, complimented the ancient vehicles that courted her curbs and lawns. It was easy to imagine you were looking at a scene of thirty or forty years ago.

This was the first automobile show held by the Tennessee Valley Chapter and it was a great attainment. Visitors were many and constant. Cars were on open-air display from early that morning until 8 p.m. that night. Ken Kirby, as Show Chairman, is to be congratulated on such a success! Ken extends his sincere thanks to all members who furnished their cars and time; these include:

### Owners

Ken Kirby  
Ken Barry  
Bill Fuhr  
Bill Spriggs  
William Hayle  
John Cook  
John Cook  
Jim Donahoo  
Bud Congdon  
Dennis McCann  
Jimmy Kimsey

### Cars

'23 "T" Ford roadster  
'26 "T" Ford coupe  
'32 "B" Ford coupe  
1918 "T" Ford touring  
1926 "T" Ford touring  
'28 Chevrolet sedan  
'28 "A" Ford roadster  
'30 "A 400" Ford  
'37 Rolls Royce sedan  
'28 "A" Ford sedan  
'29 "A" Ford roadster

\*\*\*\*\*







whispering breezes .... sighing waters .... lovely lasses lunching ....  
green grass .... antique automobiles .... baton rouge ....

25-27 august 1967 .... baton rouge.



ANTIQUE AUTOMOBILE CLUB OF AMERICA

invites you to the

1967 CENTRAL DIVISION FALL MEET

at

BATON ROUGE, LOUISIANA

SCHEDULE OF EVENTS

Friday, August 25

- 1:00 - 5:00 p.m. Registration at Hotel  
7:30 - 9:00 p.m. Welcome party with real southern ice cream, home made cakes, Cajun entertainment and southern hospitality. This will be in the State Capitol Building. Dinner is on your own with many fine restaurants located in Baton Rouge.

Saturday, August 26

- 7:00 a.m. Flea Market  
8:30 - 10:30 a.m. Registration at Stadium for late arrivals.  
11:00 - 5:00 p.m. Ladies tour to Governor's Mansion and State Capitol Building.  
11:00 a.m. Judging Begins.  
12:00 noon Box Lunch  
7:00 p.m. Banquet and Cajun entertainment.  
8:30 p.m. Presentation of awards.

Sunday, August 27

Attend the church of your choice or tour the bayous and ante-bellum homes of Louisiana.



## REGISTRATION FORM INFORMATION

Car Registration - \$1.00  
Box Lunch - \$2.00  
Adult Banquet Tickets - \$5.50  
Children (under 12) - \$3.00  
Flea Market - \$5.00 per 10 ft.  
(10 ft. minimum) No Flea Market Sunday.

Informal get together Friday Night (Free)

Total Enclosed

Fill out appropriate spaces and return promptly with check (payable to  
Baton Rouge Chapter AACA) to: Billy Moore, 2235 Vista Drive,  
Baton Rouge, La. 70809

Deadline date, August 17, 1967

## GENERAL INFORMATION

Baton Rouge is a city of flowering magnolias, picturesque lakes and bayous, winding drives, stately ante-bellum homes and imposing Government buildings. The Louisiana State Capitol Building, built by the late Huey P. Long, is probably the most famous in the country.

The Louisiana State Capitol is a building 34 stories high. It was constructed with marble from every marble producing country in the world. Most of the activities will be in this beautiful building or very near it.

Headquarters will be the Jack Tar Capitol House overlooking the Mississippi River. The deadline for room reservations will be August 15, 1967. To guarantee a room, mention Antique Automobile Club in making your reservation.

Reservations for box lunch and banquet are required. See enclosed registration form....

Deadline for registrations is Thursday, August 17, 1967. Entries received after this date will not be included in the entry booklet.



## PENNEY'S MALL SHOW

This region really did itself proud on 9, 10, and 11 June with the car show at Penney's Mall. Over 30 entries were displayed from 6 p.m. on Friday until Sunday afternoon. Bill Hayle, Meet Chairman, was ably assisted by car owners and other club members in setting up the display and "policing" the show. This was our largest non-competition display or show that has been held in North Alabama. The car show held in Athens, Alabama, on 8 June at the courthouse square in that city, served as a real prelude to this show. Each of these shows complimented the other. Television, radio, and news paper coverage was excellent. Bill extends his appreciation and thanks to everyone for their cooperation and assistance. Entries for this show included:

Bill Sefton	1913 "T" Ford touring
Arles Jackson	1917 "T" Ford touring
Bill Spriggs	1918 "T" Ford touring
Ken Kirby	'24 "T" Ford roadster
Ken Barry	'26 "T" Ford coupe
Jackie Totcky	'26 "T" Ford roadster
John Cook	'28 "A" Ford sport coupe
Dennis McCann	'28 "A" Ford sedan
Jim Latham	'28 "A" Ford 2-door sedan
Jerry Thach	'29 "A" Ford coupe
Dave Marty	'30 "A" Ford phaeton
Dr. Ben Marshall	'30 "A" Ford roadster
Bob Haroway	'30 "A" Ford coupe
Cecil Eddins	'31 "A" Ford 2-door sedan
Bill Fuhr	'32 V-8 Ford
Herb Townsend	'32 "B" Ford pickup
Thomas Malone	'31 "A" Ford coupe
Bill Sefton	'26 Rolls Royce touring
Bud Congdon	'37 Rolls Royce
Bud Congdon	'47 Rolls Royce
John Cook	'28 Chevrolet 4-door sedan
Tom Holly	'46 Chevrolet coupe
Noble Collins	'29 Franklin touring
Doc Becraft	1911 Hupmobile
Jim Beal	'38 Morgan
Jerry Peoples	'27 Pierce-Arrow sedan
Ernie Azary	'29 "A" Ford bodywork
Bill Caldwell	'26 "T" Ford coupe
Ernest Cross	'28 Chevrolet touring
Eugene George	'39 Buick
Jimmy Kimsey	'28 "A" Ford roadster
Dennis McCann	'17 Cadillac



## Penney's Mall Show continued

Additional members who assisted in helping with the show included:

David Johnson  
Kelly Hill  
Bill Hayle  
Jack Stuart

Don Huffine  
Jim Kimsey  
Don Pryor  
E. Azary

The success of this show demonstrates the spirit of cooperation and "get-the-job-done" attitude that prevails among members of this region. Bill Ashby, Regional Director, extends his personal thanks and belief that "this is the best antique automobile club in the State of Alabama — and probably the entire Southern United States."

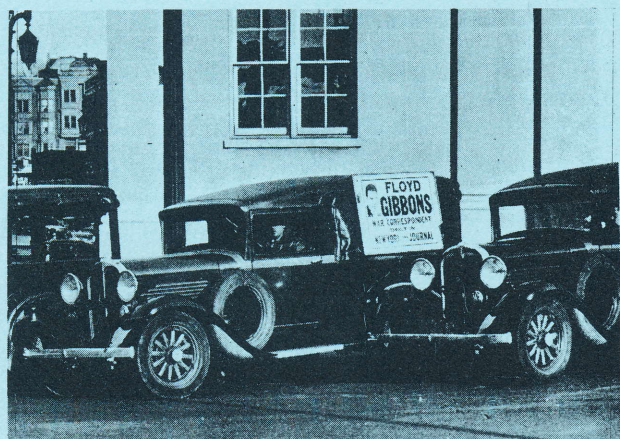
One of the highlights of this event was the antique fashion show conducted by the wives. This feature was of great interest and was well received. Wives participating in the fashion show included:

Mr. Wm. Ashby  
Mrs. Ken Barry  
Mrs. Lowell Becraft  
Mrs. Bill Caldwell  
Mrs. George Case  
Mrs. Cecil Eddins  
Mrs. Herm Gierow  
Mr. Don Huffine

Mrs. David Johnson  
Mrs. Jim Latham  
Mrs. Dennis McCann  
Mrs. Jerry Peoples  
Mrs. Jackie Totcky  
Mrs. Helen Zogg  
Mrs. James Kimsey  
Miss Mary Lee Becraft

Editor's Note: (If we have omitted anyone, please let us know so that proper credit may be given in next month's issue.)

\*\*\*\*\*



1930

These 1930 Willys pickups look like passenger cars with the back seats and side windows left out, but they were part of a new design-beginning for the truck industry.



# Interchangeable Parts For Model T Fords

by Murray Fahnestock, S.A.E. '21  
Pittsburgh, Pa.

That parts for Model T Fords are not always easy to find...will hardly start an argument. So every possibility must be considered. Among these was that, in the early 1920s, many other makes of cars used "identical" parts with those used in the Model T Ford..the only difference being in the prices charged to car owners by the dealers for those cars. The highest price was charged when the part was used in a high-priced car. . . a lower price for the part, when used for a medium-priced car and a still lower price for the part when used in a Model T Ford!

However, there was one notable exception to this general rule, the core of a tire valve was standardized early and since it could be bought almost anywhere, added to the reliability of American automobiles.

At the time when Model T Fords were about 40 per cent of all cars produced there were so many suppliers of Ford parts that other car makers bought these parts in order to obtain them at a lower cost and have the parts more readily available for service for owners of their cars.

Also Model T Ford parts were widely used for marine and small stationary engines.

At that time, lists of "interchangeable" parts were published and when we wish to obtain parts for Model T Fords, we may remember that they may sometimes be found off the beaten track.

Interchangeability was most important between Fords and Chevrolets, (the 490),

but some parts for the Overland Four, the Maxwell, and others, were also interchangeable.

## CHEVROLET 490 PARTS

Commencing with the front of the car, we have been told that the Model T Ford front hubs are interchangeable with those used on the Chevrolet 490 front wheels, and when Ford owners broke a wheel, a Chevrolet wheel sometimes did them a "good turn" by keeping them rolling along.

We have also been told that it was possible to use Model T spindles in Chevrolet 490 front axles and vice versa. With the front hubs and spindles interchangeable, it would seem possible to use the same cups and cones and ball bearings in the front wheels of both cars. At least, it should be possible to install the complete front hub and spindle assembly from one car to the other.

Skipping lightly to the rear axle, we think that the drive shaft sleeve and drive shaft roller bearing of the Chevrolet 490 and the Model T are interchangeable. It is our impression that the differential case complete from one car can be used equally well in the other.

As the Chevrolet 490 has a ball-bearing thrust washer on one side of the differential, while the Model T differential used plain thrust washers on both sides, it is not feasible to interchange the ball bearing thrust washer of the Chevrolet 490, with the plain thrust washer of the Ford. However, as the Chevrolet used a set of plain thrust washers on one side of the differential, we believe it possible that



these may be the same as those used on both sides of the Ford differential.

It is interesting to note that the pinion and drive gear of the Model T Ford car can also be used in the Chevrolet--provided that one changes both ring gear and pinion when making the installation. In other words, it is our impression that both pinion and ring gear must be either Ford or Chevrolet, as we do not think it possible to use a Ford pinion with a Chevrolet ring gear, or vice versa although we are not positive as to this.

What may interest owners of Model T Ford cars is that, while the Ford Motor Co. only supplied rear axle gears in the 4-to-one and the 3.63-to-one ratios; by using a set of Chevrolet rear axle gears, a higher gear ratio and possibly higher speeds over level roads might be obtained, although at a sacrifice of hill climbing ability.

Some readers have told us that Maxwell bodies could be installed on the Model T Ford Chassis, thus making the Good Maxwell better.

After publication of our original article on "Interchangeable Parts" in the September 1922 issue of "Ford Owner" magazine, our readers wrote us...

## INTERCHANGEABLE PARTS.

In regard to the article on interchangeable parts published on page 65 of the September 1922 issue. We know that the following parts can be used, as we use them all the time and this cuts the cost about one-third of Chevrolet prices:

- 1.—The Ford spider housing can be used in Chevrolets.
- 2.—The Ford spider and axle gears are a perfect fit.
- 3.—The Ford ring gear and pinion (used together) work good.
- 4.—The Ford axle shafts can be used in a Chevrolet by cutting them one inch shorter.

**We thank you for your interest and assure you that we are always glad to hear from our readers. It is only by the help of practical Ford repair men like yourself that the magazine can be made of real interest.**

Read your article on Interchangeable Parts, page 65 of the September 1922 issue. Have driven a Chevrolet car for six years, and have repaired it myself—using Ford parts wherever possible.

The front wheels, hubs, spindles, bolts and bearings are exactly the same. And just as many different types of rims and bearings have been used on both cars. The steering arms are also interchangeable—but those of the Chevrolet are bent downward to lower the connecting rod, on account of the Chevrolet engine oil pan being lower than that of the Ford.

The touring type gasoline tank is also interchangeable.

The drive shaft sleeve, roller bearing, roller bearing sleeve, drive shaft pinion, pinion key, the four axle shaft keys, the differential thrust washers, ring gear, and all the parts of the differential are interchangeable. All other parts of the rear axle system are not interchangeable.

The idea that Chevrolet gears will give a higher speed is wrong, as they are exactly the same as the Ford gears (having 40 teeth on the ring gear and 11 teeth in the pinion.) I have used a Ford pinion with a Chevrolet ring gear with good results.

The 1922 Chevrolets have spiral bevel rear axle gears, with 9 teeth on the pinion, and 33 teeth on the ring gear, giving a slightly lower gear ratio. These gears cannot be used in the Ford, as they require a different drive shaft and bearings.

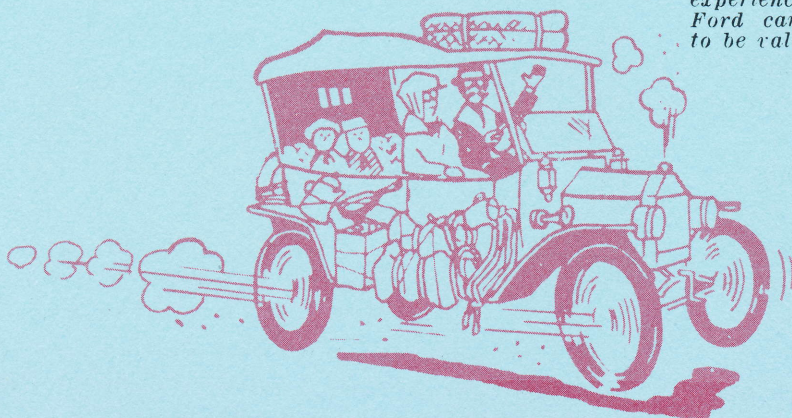
My experience in trying to replace the gear side of the differential case was that the bolt holes would not fit. So both halves of one make had to be used.

The 1917 and older Chevrolets had plain thrust washers on both sides. But on later models, a ball-bearing was fitted on the gear side, by slightly changing the rear axle housing.

The drive shaft roller bearing housings are not interchangeable, and therefore the old style Ford drive shaft roller bearing sleeve is the same as that of the Chevrolet.

It has been my experience that about the only difference in the interchangeable parts is the price! Hats off to Henry!

*We were certainly interested, Mr. Ropte, in your experiences with installing Ford parts in other-than-Ford cars; and think that your experience is apt to be valuable to other car owners.*





## 1967 CALENDAR OF EVENTS

- 8 June ANTIQUE CAR SHOW, ATHENS, ALABAMA.
- 9 - 11 June ANTIQUE CAR SHOW, PENNEY'S MALL,  
HUNTSVILLE, ALABAMA.
- 15 - 17 June JACKSON, TENNESSEE ANNUAL MEET.  
For details, contact Paul Lee, Box 352,  
Jackson, Tennessee, Tel.: 901-427-1250.
- 16 - 17 June MIRACLE STRIP ANTIQUE AUTO SHOW  
FT. WALTON BEACH, FLORIDA.
- 16 - 18 June SOUTHEASTERN REGION SPRING MEET,  
STONE MOUNTAIN, GEORGIA.
- 22 June REGULAR MONTHLY MEETING ....  
time: 7 p.m. ; place: 400 West Clinton  
Street, Huntsville, Alabama.
- 24 - 25 June Bob Ragland and all members of the Columbia,  
Tennessee Club extend a hearty invitation to  
their Annual Meet. Hdqtrs., Holiday Inn.  
No judging; games, social, and buffet dinner.  
Make reservations direct with Holiday Inn.
- 4 July HILLBILLY HOMECOMING, MARYVILLE,  
TENNESSEE.
- 15 July ANNUAL FAIR AND OLD CAR SHOW AND  
PARADE, HALEYVILLE, ALABAMA.
- 4 - 6 August RENO SWAP MEET AND CAR SHOW, AT  
HARRAH'S, RENO, NEVADA.
- 19 - 20 August MID-TENNESSEE ANNUAL PICNIC,  
NASHVILLE, TENNESSEE.
- 25 - 27 August CENTRAL DIVISION FALL MEET,  
BATON ROUGE, LOUISIANA.
- 26 August HOSPITALITY MEET, HUNTSVILLE,  
ALABAMA.
- 9 September MEET AT RED BOILING SPRINGS,  
TENNESSEE.



ADS, LEADS, AND OTHER  
INFORMATION

---

FOR SALE:

1927 Dodge Bros. Dodge for sale. A 4 door business sedan in perfect condition, original paint. Price \$1,000. Owner Phillip Anderson, Rt. 1, Carthage, Tennessee.

Rolls Royce - 1936 sedan deluxe, seven passenger, running condition, good tires, original upholstery, 23,000 miles, color black, wire wheels with covers. Bargain at \$2,750. Mrs. Jumper, 1689 Colebrook Circle, Decatur, Georgia 30033 or call 636-9038.

'23-'25 Model "T" turtle deck; also, '23 Model "T" steel firewall; also, 1 set 1917-22 Model "T" roadster sockets; and, two 30 x 3-1/2 demountable wheels. Contact Jack M. Stuart, 12005 Greenleaf Dr., S. E., Huntsville, Alabama, 881-5706.

1949 Chrysler Town and Country convertible, very nice condition, wood excellent. \$995. Chas. Becherer, Lincoln, Ill. Ph. 732-3273.

1930 Packard 4 door, original interior, excellent running condition. \$1,400. Colonial Motors, Inc., 111 Clw-Largo Rd., Largo, Fla. 584-1116.

1932 Plymouth convertible coupe with rumble seat, Model P.D.; all parts original except headlights, bumpers, and carburetor. \$875 or best offer. R. W. Nash, 8305 St. Charles Rd., Richmond, Va. 23227

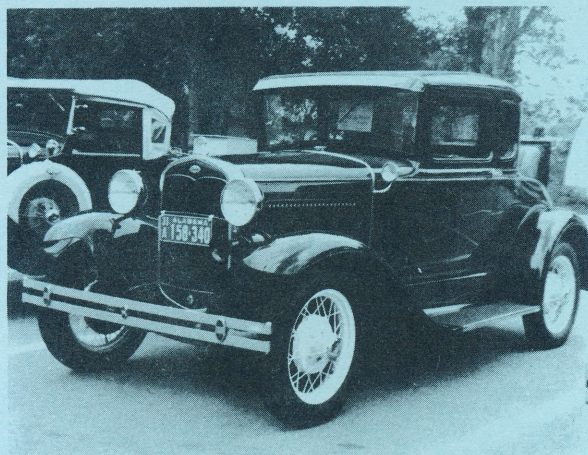
1936 LaSalle four door sedan, straight eight, Maroon. 45,550 actual miles. Drives beautifully. Best offer. Bellenger, 872 Chestnut St., Gadsden, Alabama 35901.

WANTED:

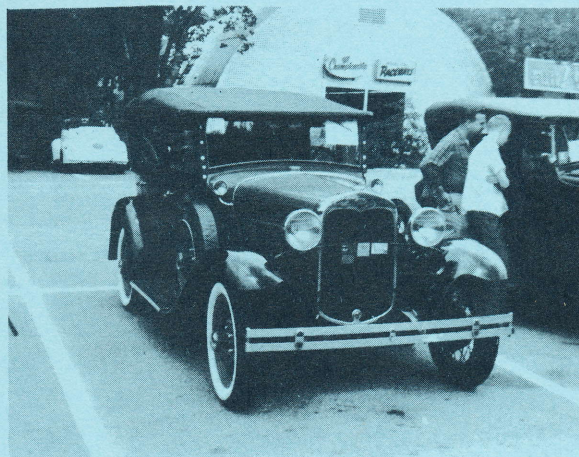
By Doc Becraft: four (4) 30 x 3-1/2 Model "T" clincher wheels (not demountable rims).



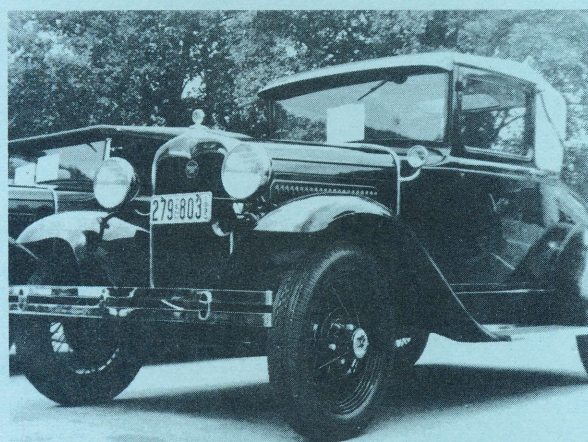
CARS SEEN AT GATLINBURG



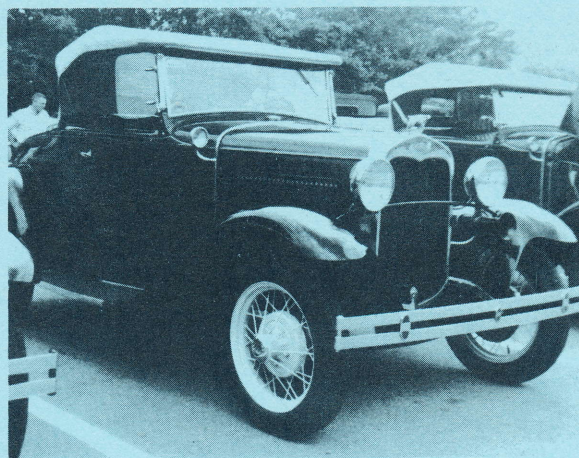
Don Pryor's beautiful  
1931 Model "A" Ford coupe, Sr. -Car  
(cover car this issue)



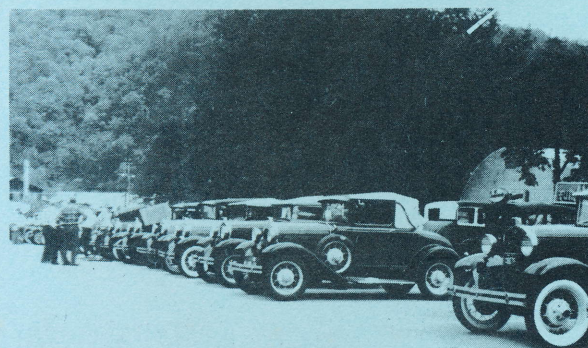
This elegant 1930 Model "A"  
Ford phaeton is a member of  
Dave Marty's family.



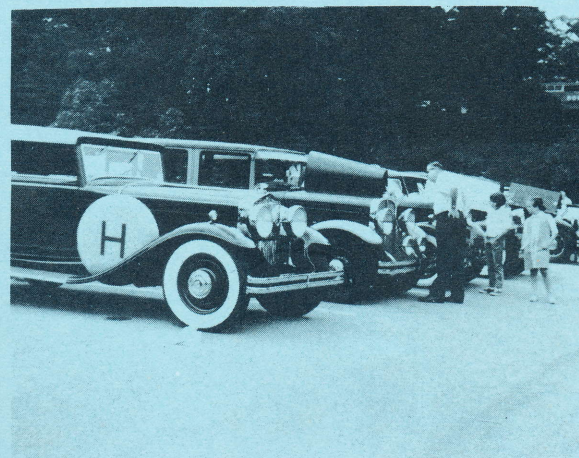
A lovely 1930 Model "A" sport coupe,  
owned by Leonard Brown, was a 1st  
prize winner.



This darling 1930 Model "A"  
roadster is owned by  
Dr. Marshall.

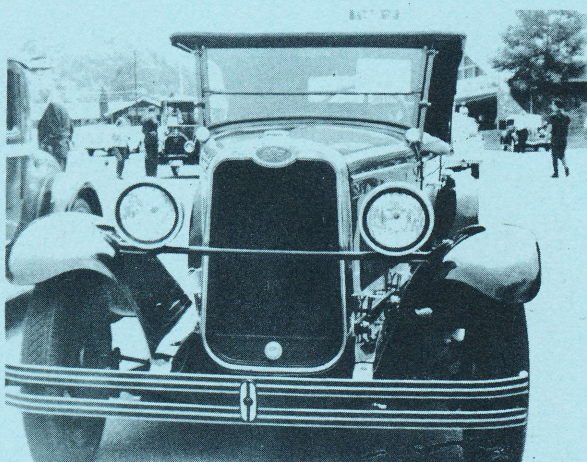


MODEL "A" row ....

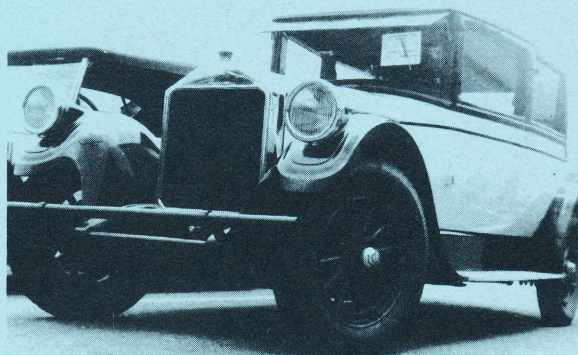


CLASSICAL CLASSICS !

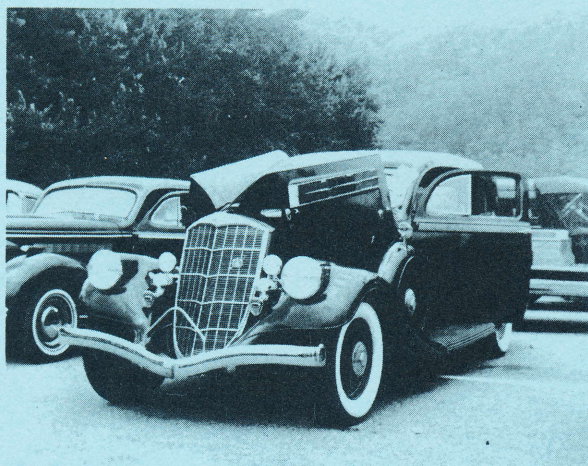




Ernie Cross's gracious  
1928 Chevrolet touring  
car was a 1st prize winner.



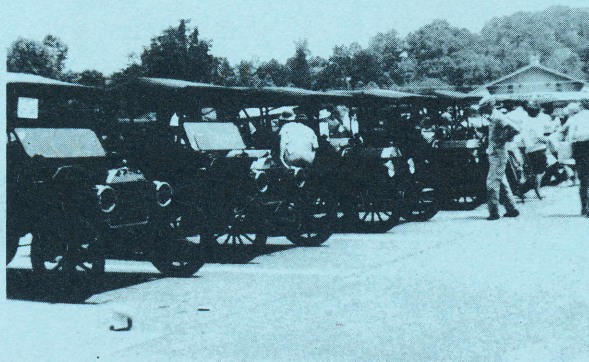
This stalwart 1927 Pierce-Arrow,  
owned by Jerry Peoples, appears  
unruffled.



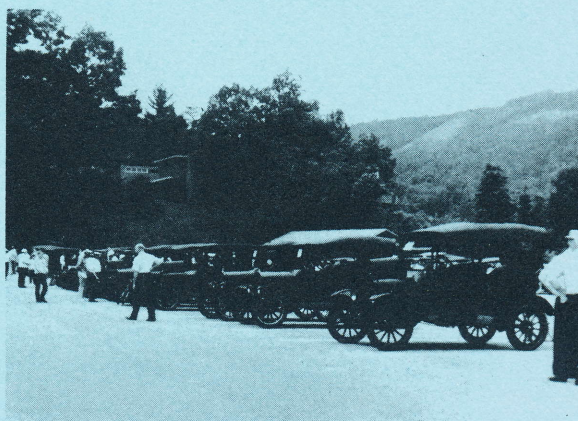
Bill Owen, Sr., of  
Mobile, Alabama, owns  
this colorful 1935 Pierce-  
Arrow classic.



Bill Spriggs is the proud  
owner of this '18 Ford touring,  
a 2nd prize winner.



Brass "T" row ....



and black "T" row ....



.... and people



The Honorable Bill Mills, Mayor of Gatlinburg, poses with Ray Henry (center), AACA President, as Ray is made an Honorary citizen of Tennessee by Hudley Crockett, Special Assistant, to the Governor of Tennessee.



Hundreds — yes, literally hundreds enjoyed the Awards Banquet held in the Gatlinburg Civic Auditorium.

photos courtesy of Jack Stuart

\*\*\*\*\*

### CLUBROOM PROJECT

The work party on 3 June on the clubroom project included: Dave Marty, David Johnson, Dennis McCann, Bill Ashby, Bill Hayle, Bill Caldwell, Ernie Azary, Jerry Thach, and Dr. Becraft. Bill Caldwell reports that the ceiling was completed and one mural has been painted on a wall. Jim Latham has obtained some "antique" newspapers from the Huntsville Times for "papering" other walls. The clubroom is now ready for our June meeting, although a certain amount of "finishing" touches will still be done. Members are urged to bring chairs, posters, pictures, cuts, and any other material intended for the room. Eugene George is urged to bring the library material so it may be placed for use.



# the automobile

in miniature for the collector



**sinclair's**  
SPRING 1967

300 E. HIGHLAND DRIVE  
ROCHESTER, N.Y. 14610

Page 20

25¢



## BOOKS FOR ANTIQUE CAR BUFFS

**SINCLAIR'S**



**"MODEL CAR COLLECTING"**  
by F. Brian Jewell

Here is a fascinating new book that you will want to add to your library whether you collect, build or race model cars. It's the first book devoted to the subject and provides a complete introduction and guide to a hobby whose international appeal has grown rapidly in the past few years. It shows how the purchase of a model can be the first step toward assembling a collection as varied or as specialized as interest and wallet dictate.

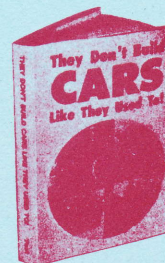
The author, who is Secretary of the Model Car and Replica Society, places emphasis throughout on mass produced miniatures and the methods by which they can be modified, a fascinating branch of the hobby which requires no more than a "kitchen-table workshop", modest ability and an interest in cars. In addition, a world of information is included on manufacturers throughout the world. Beautifully printed, bound in cloth, and illustrated with photographs of more than seventy model vehicles, it is a book you will cherish and refer to again and again. 120 pages.

#118 "MODEL CAR COLLECTING" **\$3.95**

### "EARLY CARS"

A beautiful cloth bound book with slip jacket and large illustrations of over 150 cars, 35 in full color. Cars cover the range from the earliest days to 1930. Interesting data included on every car illustrated.

#122 "EARLY CARS" **\$4.95**



### "THEY DON'T BUILD CARS LIKE THEY USED TO"

How many times have you heard that phrase? The intent of this book is to describe and illustrate some of the features and cars of the past that dramatically point out that all is not new that seems new in the automobile world. For example: Coil springs were utilized in 1910, V8 engines were used in 1907, reclining seats were available in 1918 and there were compact cars in 1903! In addition you'll see a car that had rear seat steering in 1913, the Octoauto with eight wheels, and a midget car that could be bought complete with "garage" for \$250! You'll enjoy these 208 pages, profusely illustrated. Cloth bound.

#137 "THEY DON'T BUILD CARS LIKE THEY USED TO" S.K. Yost **\$4.75**



### "THE GREAT OLD CARS, WHERE ARE THEY NOW?"

Stories and photographs of great, but ill-fated American cars which are no longer manufactured. A big paper bound book of 228 pages.

#138 "THE GREAT OLD CARS, WHERE ARE THEY NOW?" S.K. Yost **\$3.75**

### "THE ROLLS-ROYCE PHANTOMS"

This beautiful little book is highly recommended to anyone who loves the Rolls Phantoms. The stories, specifications and photographs cover the noble Phantoms from their introduction in 1925 through their demise in 1963. 64 pages, cloth bound.

#141 "THE ROLLS-ROYCE PHANTOM" D.B. Tubbs **\$3.50**



Model "A" Engine Restoration Tips  
by: Dan Shady

---

The materials and finishes in restoring a Model "A" engine are presented below in tabulated form as a quick and ready reference for use in restoration.

Ford Engine Green:

Block	Crankshaft Pulley
Head	Intake Manifold
Valve Chamber Cover	Flywheel Housing
Front Timing Gear Cover	Clutch Housing
Side Timing Gear Cover	Transmission Case
Water Pump Housing	Gear Shift Housing
Water Outlet	Universal Joint Housing (Note 1)
Water Inlet	

Black Enamel:

Oil Pan	Fan Assembly
Splash Pans	Front Motor Support
Starter	Muffler (Heat Resistant) (Note 3)
Generator (Note 2)	Muffler Clamp (Heat Resistant)
Generator Pulley	(Note 3)
Distributor Body	Clutch Pedal
Coil	Brake Pedal
Wire Clips	Clutch Housing Hole Cover
Carburetor (Gasoline Resistant Enamel)	Flywheel Housing Shield
Accelerator Assembly	Radiator Outlet Pipe
Sediment Bulb (Cast Iron Type)	Oil Return Pipe
	Oil Filler Pipe

Cadmium Plate:

Starter Switch (Note 5)	Timing Gear Front Cover Bolts and Lock Washers (Note 4)
Starter Switch Push Rod (Note 5)	Timing Gear Side Cover Bolts and Lock Washers (Note 4)
Accelerator Pedal	Water Inlet Bolts and Lock Washers (Note 4)
Accelerator Linkage (Note 5)	Water Pump Nuts and Lock Washers (Note 5)
Oil Level Indicator	Front Zerk Grease Fitting on Water Pump
Generator Cut-Out	Exhaust Manifold/Intake Manifold Stud Nuts, Flat Washers and Lockwashers (Note 5)
Spark Linkage (Note 5)	Choke Rod Locking Sleeve (Note 1 or 5)
Throttle Linkage (Note 5)	
Carburetor Main Body Bolt	
Exterior Fittings on Carburetor (Throttle Lever, Choke Lever, Fuel Adjusting Needle Drive, Etc.,) (Note 6)	
Nuts for Head Studs — Head Bolt Nuts (Note 5)	



## Model "A" Engine Restoration Tips - continued

### Raven: (Black Phosphate and Oil Coated)

Distributor Bails  
Timing Pin  
Valve Chamber Cover Bolts  
and Lock Washers

Oil Pan Drain Plug (Note 3)  
Studs for Cylinder Head, Water  
Pump and Manifolds (Note 3)  
Muffler Clamp Bolts (Note 3)

### Zinc:

Radiator Hose Clamps

### Unfinished: (Plain Steel)

Transmission Drain Plugs

### Brass:

Water Pump Packing Nut (Note 7)  
Spark Plug Connectors (Note 8)  
Gas and Vacuum Lines (Note 9)  
Gas and Vacuum Line Fittings  
Spark Plug Knurled Finger Nuts

Drain Cock on Water Outlet Pipe  
Rear Grease Fitting on Water Pump  
Nuts on Muffler Clamp Bolts  
Distributor Bail Rivets

### Raven, Zinc, or Cadmium:

Oil Filler Cap (Note 3)  
Oil Pan Bolts  
Flywheel Housing Bolts

Transmission Bolts  
All Unmentioned Bolts, Nuts,  
and Lock Washers

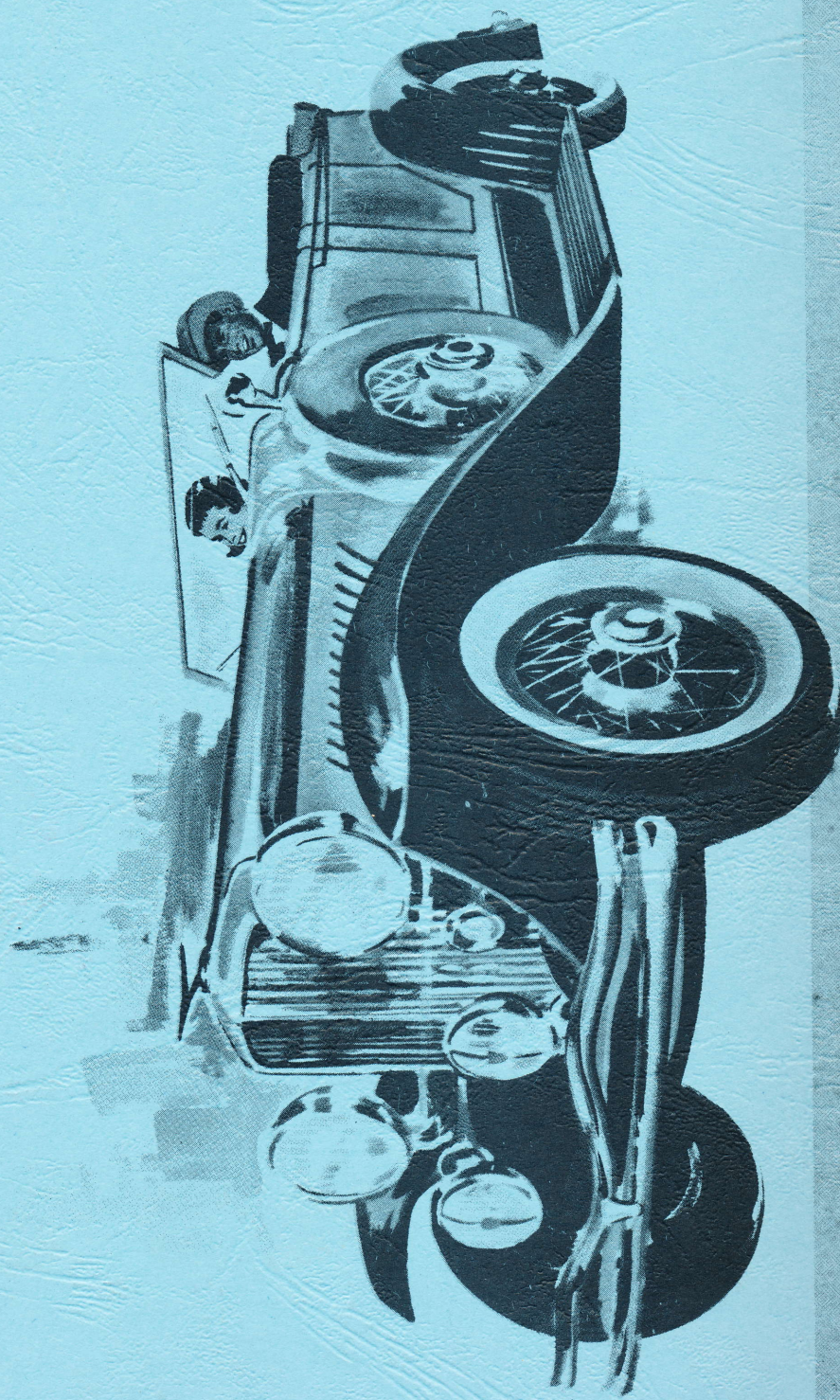
### Notes:

1. Or Black Enamel.
2. Aluminum End Plates on Some Powerhouse Generators Were Left Unpainted.
3. Or Unfinished (Plain Steel).
4. Or Black Phosphate (Raven).
5. Or Zinc.
6. On Early Models Indicated Parts Were Brass.
7. Brass on 28 - 29 Models, Zinc Plated Steel on 30 - 31 Models. Either Kind Correct on Late '29 or Early '30 Models.
8. Or Type A Bronze.
9. Or Terne Plated Steel Tubing (Lead - Tin Hot Dip)

(We are happy to reprint this "correct" version. Dan, we apologize for misplacing certain Note references in the May issue that we failed to catch while proof-reading.) — Ed.



antique  
Autos



The Mighty Duesenberg    *america's classic performance king*